



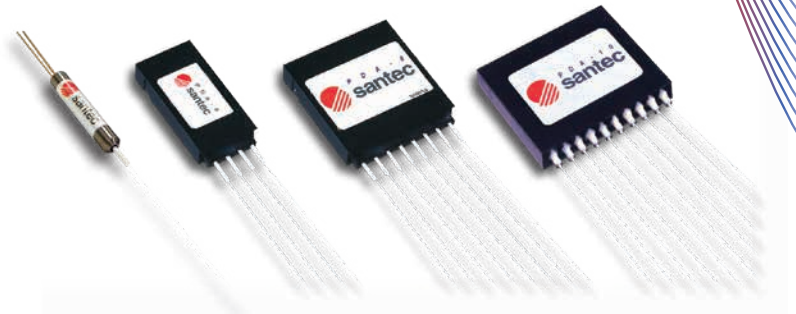
Fiber-Pigtailed Photo Detector

PDA-1/4/8/10

Product Overview

The PDA is an optical power monitoring device consisting of terminating photo detectors that are integrated with fiber inputs. The PDA is very compact and is easily mounted on PCB for system use.

The PDA provides a simple and low cost solution for power monitoring at DWDM and amplifier systems.



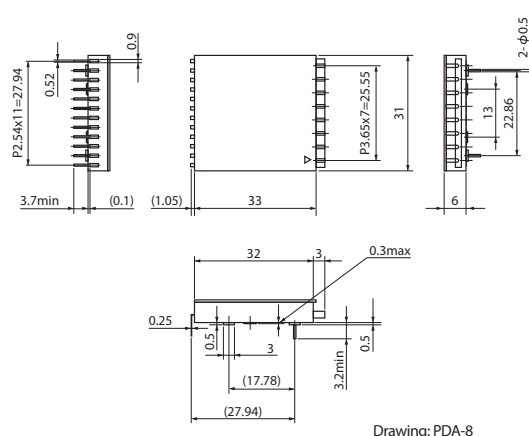
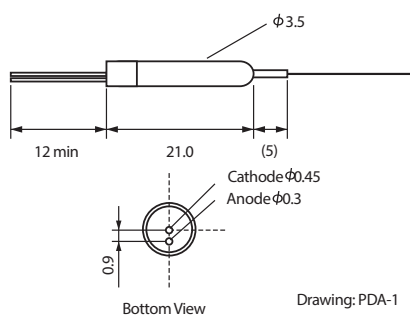
Features

- High Quality (GR-468-CORE Qualified)
- Excellent Characteristics
- Compact Design
- Minimum Fiber Bending Radius of 5 mm is available

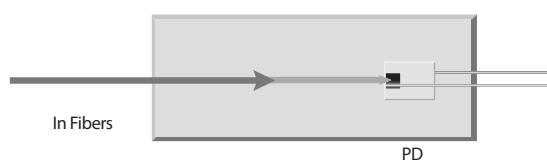
Applications

- Power and Channel Monitoring for WDM Systems
- Power Monitoring in any optical communications

Dimensions Unit [mm]



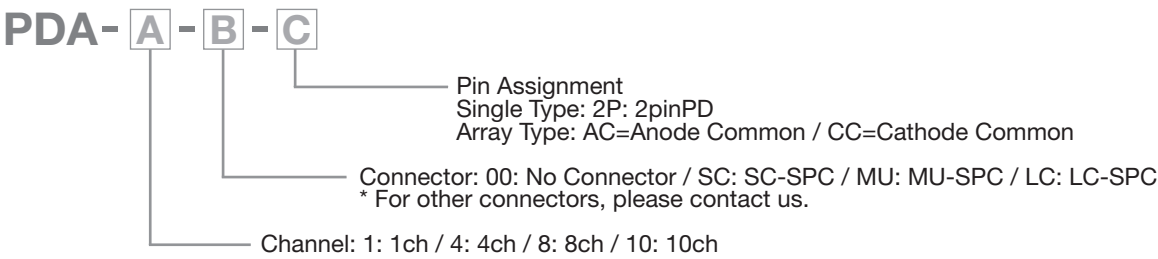
Configuration



Specifications

Parameter	Unit		Type	Notes
Return Loss	Min.	dB	45	-
PD Responsivity	Min.	mA/W	800	All operating conditions, 5 V bias
Dark Current	Max.	nA	5	70 °C, 5 V bias
Reverse Voltage	Max.	V	10	-
Forward Current	Max.	mA	5	-
Wavelength Range	-	nm	1510 to 1610	-
Storage Temperature Range	-	°C	-40 to 85	RH: 85%(Max.), Non condensation
Operating Temperature Range	-	°C	0 to 70	RH: 85%(Max.), Non condensation
Input Optical Power	Max.	dBm	+3	-
Fiber Length	Min.	mm	1000	0.25 mm coating SMF
Dimension	-	mm	3.5(D)X 21(L)	PDA-1
			17.5X32X6	PDA-4
			31X32X6	PDA-8
			39X32X6	PDA-10

Ordering Code





Santec Japan Corporation
Tel: +81-568-79-3536

Santec USA Corporation
Toll-Free: +1-800-726-8321

Santec Europe Ltd.
Tel: +44-20-3176-1550

Santec (Shanghai) Corporation Limited
Tel: +86-21-58361261



